

the **MESSENGER**

The Gift of Connection: Together for the Holidays

December 2025

Kristen's Comments: *Keeping the Light Shining at Wesleyan*

*From the Desk of Kristen Jones,
WSL Foundation's Executive Director*

As we move toward the close of another year—and I find myself another year older—it's easy to wander down the road of uncertainty.

Change, challenges, and the unexpected seem to come from every direction in the world today. And yet, as the days grow shorter and we turn toward the holidays, I'm reminded that this season has always been about light—the kind that shines even when the path ahead isn't clear.

Certainly, the holiday season brings back sentimental thoughts of days past. One of my favorite childhood memories is of the darkened sanctuary of our church, with each person lighting a candle to fill the space with warmth and glow.



Here at Wesleyan, we find that light takes many forms. It's the warmth of a smile shared between neighbors. It's the blessings of our Chaplain Kurt's weekly worship services for our residents. Sometimes it's the joy of seeing a resident smile for the first time in ages. It's the laughter that fills a resident activity, the music drifting from Cascade Hall, the care offered to a resident who needs a helping hand. It's the sense of belonging that makes Wesleyan Village and Wesleyan Meadows feel like home.

Our work isn't always easy. There are many hills to climb and challenges along the way. But our mission—to provide a vibrant, meaningful, and compassionate environment for those we serve—guides us forward. I imagine the women who founded our organization nearly 130 years ago often felt uncertainty too, yet they pressed on with purpose and vision.

Through your generosity you bring light to living—not just during the holidays, but all year long. Your gifts brighten our campuses, support programs that enrich lives, and remind every resident that they are seen, valued, and loved. Even when the path ahead is unclear, your support helps us face it with hope and strength.

As we enter this season of gratitude and giving, I simply want to say *thank you*—for being part of our story, for believing in our mission, and for helping us keep the light shining brightly for those who call Wesleyan home.

With gratitude and in the light of every joyful moment,

Kristen Jones
Executive Director,
Wesleyan Senior Living Foundation



Enhancing Safety and Care: Our New Nursing Call System

We're excited to announce the installation of a **new nursing call system** in our **healthcare areas** and **communication system upgrades** in the **assisted living areas**, made possible thanks to the generosity of the Dorothy I. Zahars Fund. This upgrade is designed to make it easier for residents to get the help they need—when they need it.

This state-of-the-art system, which will also be further supported with a new network server that will be installed in the coming weeks, will ensure faster response times, allowing staff to attend to residents promptly, whether it's for a simple request or an urgent need. The changes will allow staff to carry a handheld radio for instant communication. Also, the radios will transmit all calls with no loud beeping tones in the hallways that disturb residents while sleeping.

Beyond safety, the system also supports resident independence and peace of mind and allows families to feel confident that their loved ones' needs are being addressed.

With this upgrade, our goal is simple: to provide safer, more responsive care that enhances quality of life for every resident. We're pleased to bring these improvements to our community, made possible by the power of philanthropy.

Our Annual Holiday "Angel" Appeal

For many of us, home is a place where we find peace and comfort. Because home is where the heart is, our heart's desire at Wesleyan is to bring comfort, joy and peace to our residents throughout the year and especially during the holiday season. **We respectfully ask your consideration of our Annual Angel Appeal.**



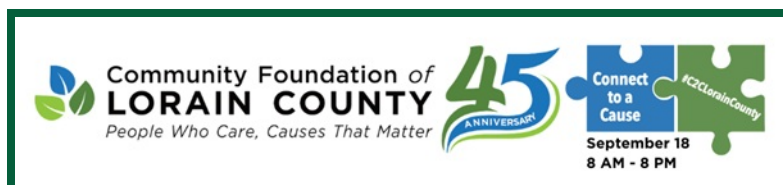
In the coming years, we will continue to see more and more need for our benevolent **Life Care Fund**. Government funding only pays a portion of the actual cost of care, leaving a financial gap which we must fulfill for each individual. The fact is, we need your help now more than ever before. We hope you will join us in making the promise of our Life Care Fund a reality for all those whose own resources have been depleted through no fault of their own.

You might also choose to support our **Greatest Needs Fund**. This fund supports resident needs, projects, equipment, and programs that will be beneficial to all our residents and will allow us to address immediate needs and opportunities.

If you have received your Holiday Appeal in the mail, we hope you'll give generously. In case you've misplaced it, simply visit us at villageliving.org/wesleyan-foundation for the ability to give online.

New Auracast™ Technology to Improve Hearing Assistance

Thank You for Supporting *Connect to a Cause!*



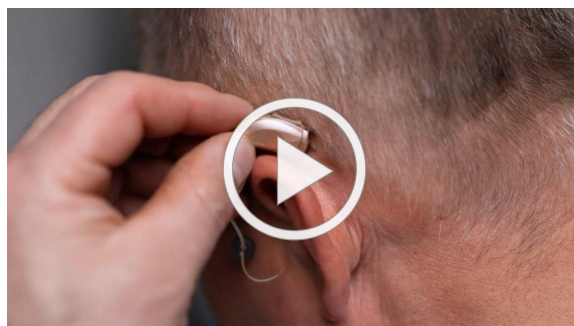
On September 18, Wesleyan Senior Living Foundation proudly participated in **Connect to a Cause**, a 12-hour crowdfunding campaign hosted by the Community Foundation of Lorain County to support nonprofits like ours in sustaining their vital missions.

We were **thrilled and deeply grateful** for the incredible response! In just one day, our community helped us raise nearly \$12,000, supporting our endowed fund at the Community Foundation and boosting our “available to spend” balance—ensuring we can continue enriching the lives of our residents.

We're especially excited to share that a portion of these generous donations will be used to install **Auracast™ technology** on both campuses. This cutting-edge system will greatly enhance residents' ability to hear programs, worship services, and special events, making every experience clearer and more enjoyable.

Support the future of care through our sustainable endowed fund at the Community Foundation of Lorain County—[click here](#) to make your impact last.

View the video below to get a first look!



New Technology to Provide Hearing Assistance

Wesleyan Senior Living Foundation is proud to announce the addition of Auracast™ hearing assistance technology, coming to our campuses in early winter 2026.

With this upgrade, Auracast™ will be installed in **Cascade Hall at Wesleyan Village** and the **Sheffield Room at Wesleyan Meadows**. Cascade Hall will also receive a completely new audio system, including upgraded speakers and microphones.

These advancements in resident care were made possible through generous gifts to our endowed fund at the Community Foundation of Lorain County during this year's ***Connect to a Cause*** campaign and the **Dorothy I. Zahars Fund**.

Auracast™ represents the next generation of assistive listening—broadcasting sound directly to hearing aids, cochlear implants, or personal earbuds using a smartphone. Residents and guests who use compatible devices will enjoy **richer, clearer audio** with reduced background noise, and no extra equipment.

Unlike traditional hearing loop systems, Auracast™ requires no construction, making it faster to deploy and even easier to use. Soon, our community spaces will support a more inclusive listening experience—helping everyone participate in programs, worship, entertainment, and events with greater clarity, comfort, and confidence.

We can't wait for you to hear the difference.

A Look Back in Time

Pictured here:

Downtown Elyria at Christmas, circa 1958.

The C.H. Merthe department store was a local favorite, and you can also see pictured our famous “Big Blue Bus”—an “early version” of a mini-van and a beloved fixture that transported our residents around town for shopping, errands,



and community activities. Everyone in Elyria recognized the Big Blue Bus!

Home for the Holidays: Presence, Care, and Connection

The holidays shine with music, tradition, and connection. But for many, and particularly older adults, the season can also bring waves of nostalgia, loss, or moments that feel emotionally overwhelming. Some call this the holiday blues—a common, temporary period of sadness that differs from Seasonal Affective Disorder (SAD). These feelings don't mean joy is absent; it more appropriately means the heart is simply holding on to memories more tightly than usual. Even so, the holidays can still be rich with comfort, laughter, and belonging—especially when we all show up for one another.



A Message to Families and Friends

If you're reading this, you care—and that matters. The holidays don't need to look or feel perfect to be meaningful. Even from afar, thoughtful check-ins, familiar voices on a call, or a handwritten card can carry extra warmth. Most of all, being present—listening to stories, sharing a laugh, or just sitting side-by-side—brings connection.

A Message to Residents

Your stories, traditions, humor, and presence shape every community gathering we share. If a day feels heavy, lean on the people and activities around you—a neighbor, a staff member, a shared event, or a seasonal treat. Connection comes in many forms, and all of them count.

Whether offering care or receiving it, the most enduring gift is togetherness. This holiday season and always, you are seen, you are valued, and you are never alone here.



You Can Leave a Legacy of Joy and Care!

The holidays are a time to cherish family, reflect on what matters most, and think about the ways we can make a difference. Family always comes first—but it's also possible to **leave a gift in your estate plan that supports Wesleyan Senior Living Foundation and touches lives for generations.**

A **residuary bequest** allows you to provide for family first, with a remaining portion of your estate directed to a cause you care about. Gifts of all sizes make a difference, and **there are options that can even provide income to you during your lifetime.**

"Your kindness today can inspire care, comfort, and joy for many tomorrows."

Share Your Gift of Giving

This season, consider planning your legacy. We would be honored to help you explore ways to make a lasting impact. Consult your attorney to ensure your plans reflect your wishes and celebrate the joy of giving that continues to bless others.

Explore Your Options

If you'd like to learn more about ways to leave a legacy at Wesleyan Senior Living, please contact **Kristen Jones**. She can guide you through your options and help you plan a gift that aligns with your values. As always, we suggest you consult your attorney or finance planner for further conversations.



Holiday Hope Drive Brings Joy— Thanks to You!

Residents across Wesleyan Village and Wesleyan Meadows once again demonstrated the heart of our community through this year's **Holiday Hope Drive**. Together, we collected a generous assortment of items for "Senior Boxes" benefiting vulnerable, homebound older adults throughout Lorain County.

We were delighted to partner with **Puro-Clean Emergency Restoration**, who gathered donations on behalf of **Neighborhood Alliance's** Christmas for Caring program—a meaningful effort that spreads holiday cheer to local seniors by delivering thoughtfully filled gift boxes.

What began as a goal to fill just one box quickly grew into *many*, filling an entire carload, with thanks to the overwhelming kindness of our Wesleyan family. These boxes will brighten the holidays for shut-in seniors across the wider community, reminding them that they are remembered and cared for.

Thank you to everyone who donated and helped share the joy of the season!



Follow our communities on [Facebook](#) to hear news about upcoming events and activities!

Wesleyan Village: [Facebook](#)

Wesleyan Meadows: [Facebook](#)

Smart Giving Tips!

What You Should Know About Year-End 2025 Charitable Giving

As we move toward the end of 2025, here are a few important updates about upcoming tax law changes that may affect how you plan your charitable giving.

New Deduction Rules Are Coming

Starting in 2026, charitable contributions will only be deductible to the extent they exceed 0.5% of your adjusted gross income. This new “floor” means some gifts may no longer be fully deductible, so 2025 is an important year to think ahead.

Cash Gifts Still Provide Strong Benefits

You can continue making cash gifts directly to operating charities, and the above-the-line deduction for non-itemizers is now permanent.

You May Want to Consider “Bunching”

If you typically spread your gifts over several years, you might consider bunching them into 2025 so you can maximize your deduction before the new rules take effect.

Appreciated Securities Can Be a Smart Option

If you hold appreciated assets—like stocks—you can donate them directly to a public charity. This lets you avoid capital gains tax and deduct the fair market value of the gift.

Donor-Advised Funds Offer Flexibility

Donor-advised funds allow you to claim a full deduction now, in 2025, while recommending grants to charities later. It’s a helpful tool for those who want to lock in current tax advantages.

As always, we encourage you to speak with your tax advisor or financial planner to make sure your giving strategy aligns with your goals and the new regulations ahead. I'm sharing this now so you can make the most informed decisions possible.



WESLEYAN

— SENIOR LIVING FOUNDATION —

Our Mission

Rooted in faith and guided by compassion, Wesleyan Senior Living Foundation supports the physical, emotional, and spiritual well-being of our residents - now and in the future - by stewarding charitable resources to enhance care, enrich community life, and uphold the dignity of every individual we serve.

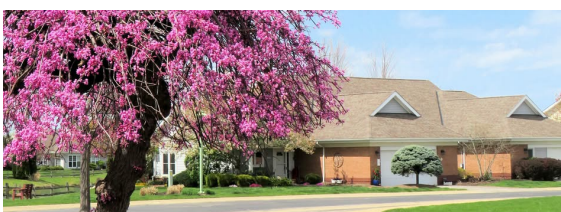
Contact:

Kristen Jones, CFRE

Executive Director, WSL Foundation

(440) 284-9000, extension 4226

Wesleyan Village
807 West Avenue
Elyria, OH 44035
(440) 284-9000
Visit Our Website



Wesleyan Meadows



5400 Meadow Lane Court
Sheffield Village, OH 44035
(440) 934-9400
[Visit Our Website](#)

Click here to
Donate Now

We want to *Thank You* - you're already a valued member of our community and won't miss out on any stories, updates, or news. Please forward and share with a friend so they can be part of the stories, updates, and news too!

Not receiving the e-edition of *The Messenger*? Stop by the Foundation office, or share your email by clicking here:

*Sign Up Here to Receive The
Messenger!*

Wesleyan Senior Living Foundation | 807 West Avenue | Elyria, OH 44035 US

[Unsubscribe](#) | [Update Profile](#) | [Constant Contact Data Notice](#)



Try email & social marketing for free!